

SEDIMENT FILTER LOG

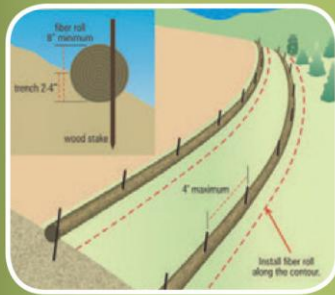


Illustration of filter log installation.



Drive stakes every 3-4 feet along the filter log.

Photo credit: Barry Tanning, Tetra Tech



Make sure filter log stakes are spaced to prevent undercutting or bypasses. Leave stake tops extended along sections to prevent drive-overs.

Photo credit: Barry Tanning, Tetra Tech



Provided to you by Calcasieu Parish
Police Jury Environmental Department



USE: Intercept and contain muddy runoff to trap sediment. Includes fiber rolls, sediment logs, bio rolls, etc.

LOCATION: Downhill from bare soil or other disturbed areas.

DESIGN CRITERIA:

- Grade area where the fiber roll will be located.
- Dig a 3-inch deep rounded trench around the downhill lot perimeter.
- Install filter log in the trench, pressing firmly into place.
- Place a 2" layer of compacted fill material on the upslope side of the log to prevent undercutting.
- Pull filter log gently when driving stakes – do not stretch!
- Drive stakes through the filter log every 3-4 feet; leave 3 inches above roll.
- Use 24-inch stakes in soft soil, and 18-inch stakes in harder ground.
- Ensure maximum area draining to the filter log is less than one acre.
- Use larger diameter filter log for steeper sites or high-runoff areas.

MAINTENANCE:

- Check for bypasses and undercutting after rainstorms.
- Use additional stakes to firm up bypass or undercut areas.
- Remove sediment before it reaches halfway up the exposed filter log.
- Inspect the sediment filter log and repair undercut/bypass areas.
- If a complete replacement or a new control is required, complete and make operational within 7 calendar days where feasible.

TIPS:

- Filter logs are intended for relatively flat or slightly rolling terrain.
- Use silt fencing in areas where slopes are long or steep.
- Do not drive over filter log sections.

REMOVAL:

- Remove filter logs after all bare areas have been sodded/seeded.
- Grade and sod or seed/mulch area where filter log was installed.